

*DETAILS AND DIMENSIONS MAY DIFFER FROM ACTUAL PLANS AND ELEVATIONS. RENDERINGS ARE FOR ILLUSTRATION PURPOSES ONLY. PLEASE REFER TO THE ARCHITECTURAL AND CIVIL DRAWINGS FOR ACCURATE SITE CONDITIONS.



FRONT ELEVATION

SCALE: 3/32"=1'-0"

7,605 FIN. SF

6616 LYBROOK COURT

BETHESDA, MD 20817

COPYRIGHT 2011, GTM ARCHITECTS, INC.



11.0136

*DETAILS AND DIMENSIONS MAY DIFFER FROM ACTUAL PLANS AND ELEVATIONS. RENDERINGS ARE FOR ILLUSTRATION PURPOSES ONLY. PLEASE REFER TO THE ARCHITECTURAL AND CIVIL DRAWINGS FOR ACCURATE SITE CONDITIONS.



FRONT ELEVATION

SCALE: 3/32"=1'-0"

7,605 FIN. SF

6616 LYBROOK COURT

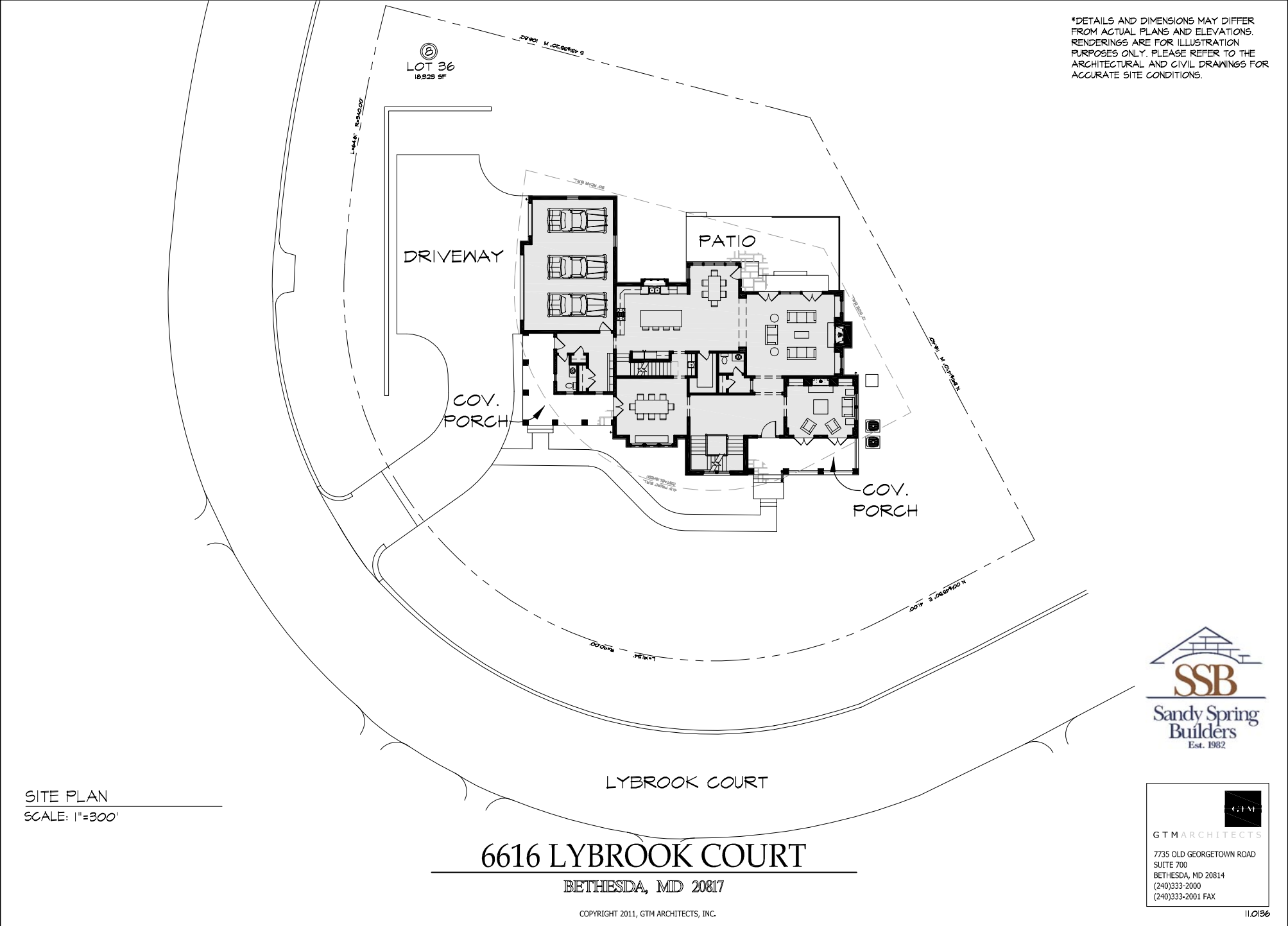
BETHESDA, MD 20817

COPYRIGHT 2011, GTM ARCHITECTS, INC.



11.0136

*DETAILS AND DIMENSIONS MAY DIFFER FROM ACTUAL PLANS AND ELEVATIONS. RENDERINGS ARE FOR ILLUSTRATION PURPOSES ONLY. PLEASE REFER TO THE ARCHITECTURAL AND CIVIL DRAWINGS FOR ACCURATE SITE CONDITIONS.

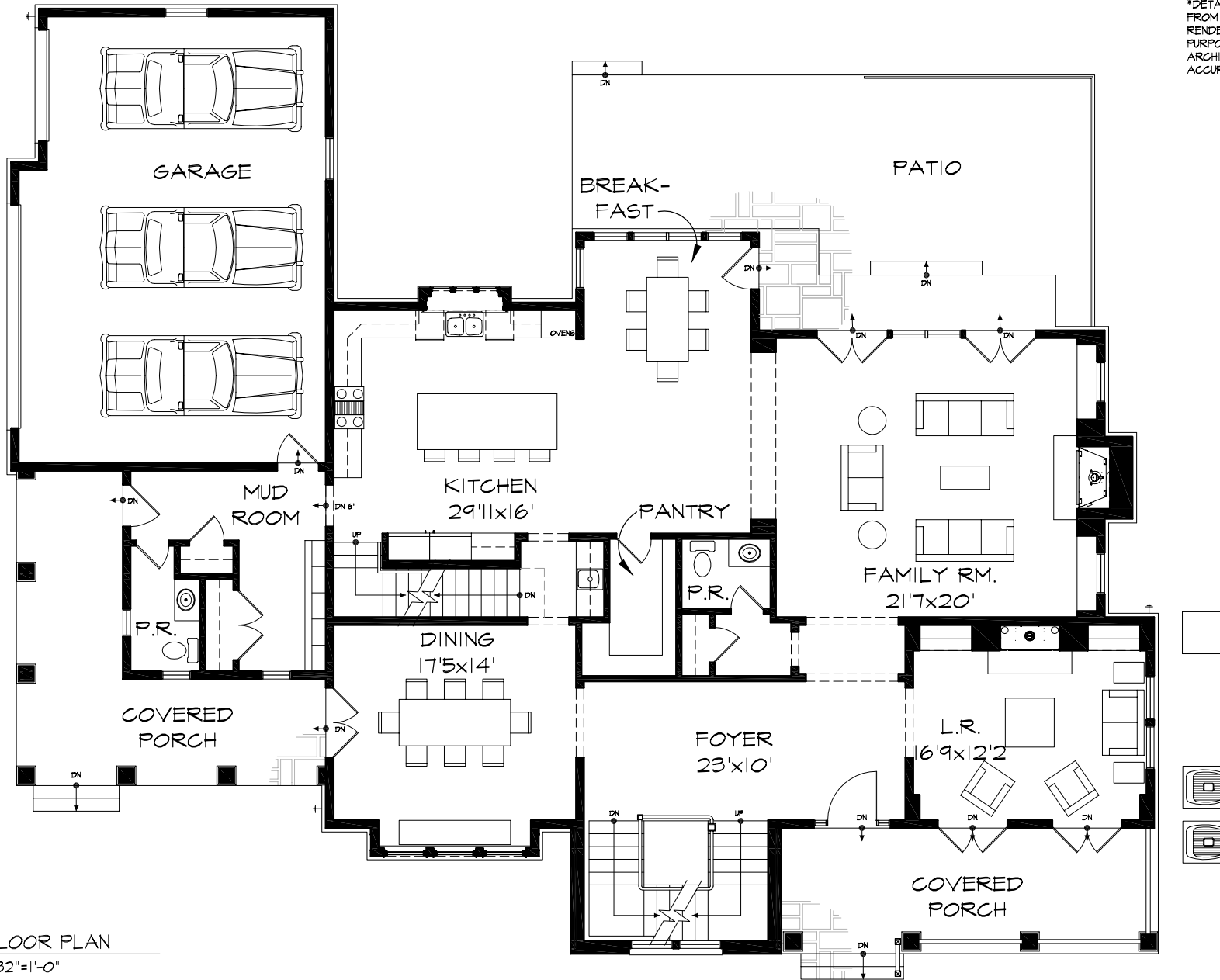


SITE PLAN
SCALE: 1"=300'



GTM ARCHITECTS
7735 OLD GEORGETOWN ROAD
SUITE 700
BETHESDA, MD 20814
(240)333-2000
(240)333-2001 FAX

*DETAILS AND DIMENSIONS MAY DIFFER FROM ACTUAL PLANS AND ELEVATIONS. RENDERINGS ARE FOR ILLUSTRATION PURPOSES ONLY. PLEASE REFER TO THE ARCHITECTURAL AND CIVIL DRAWINGS FOR ACCURATE SITE CONDITIONS.



FIRST FLOOR PLAN
SCALE: 3/32"=1'-0"

6616 LYBROOK COURT

BETHESDA, MD 20817

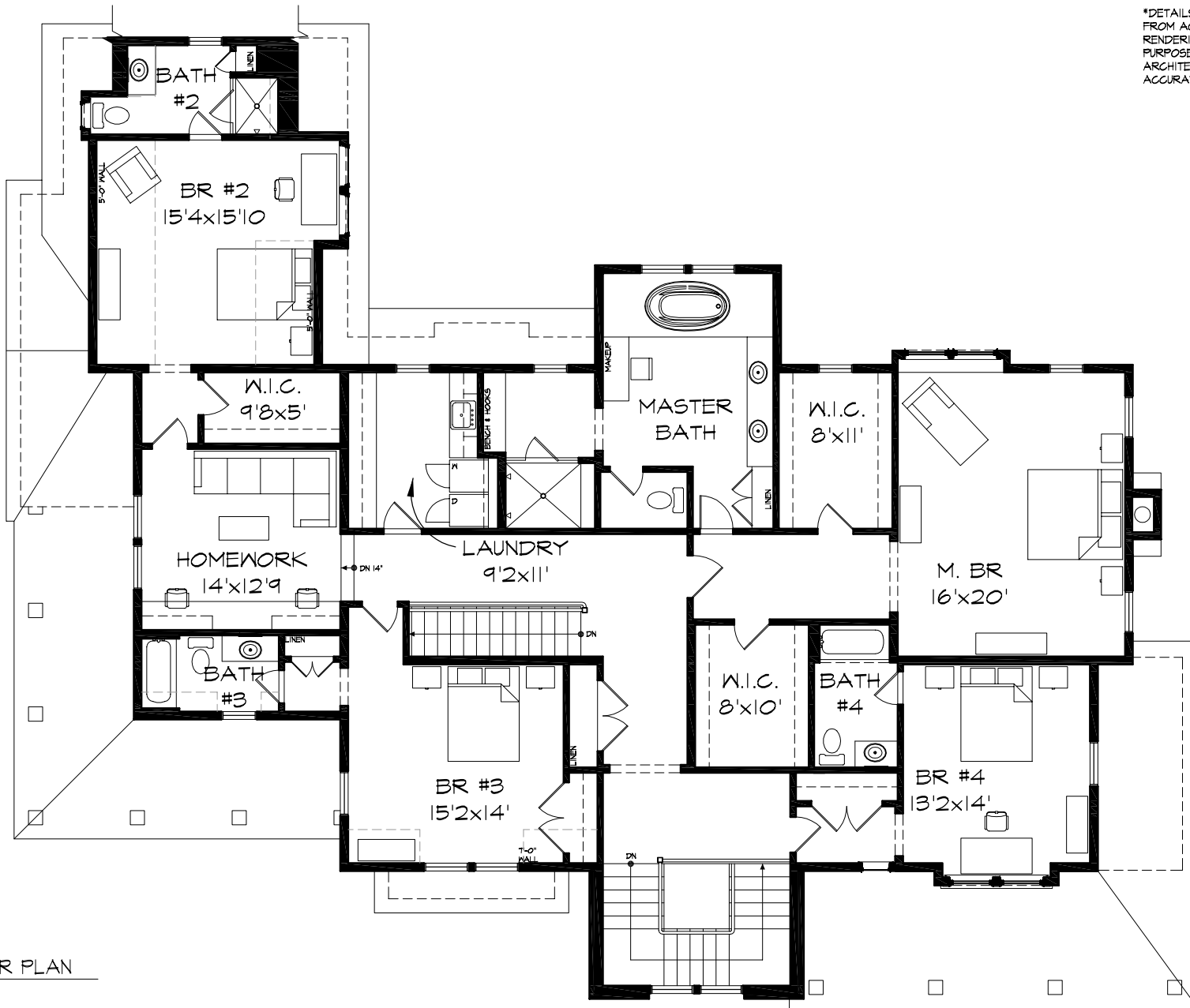
2,528 FIN. SF

COPYRIGHT 2011, GTM ARCHITECTS, INC.



GTM ARCHITECTS
7735 OLD GEORGETOWN ROAD
SUITE 700
BETHESDA, MD 20814
(240)333-2000
(240)333-2001 FAX

*DETAILS AND DIMENSIONS MAY DIFFER FROM ACTUAL PLANS AND ELEVATIONS. RENDERINGS ARE FOR ILLUSTRATION PURPOSES ONLY. PLEASE REFER TO THE ARCHITECTURAL AND CIVIL DRAWINGS FOR ACCURATE SITE CONDITIONS.



SECOND FLOOR PLAN
SCALE: 3/32"=1'-0"

2,899 FIN. SF

6616 LYBROOK COURT

BETHESDA, MD 20817

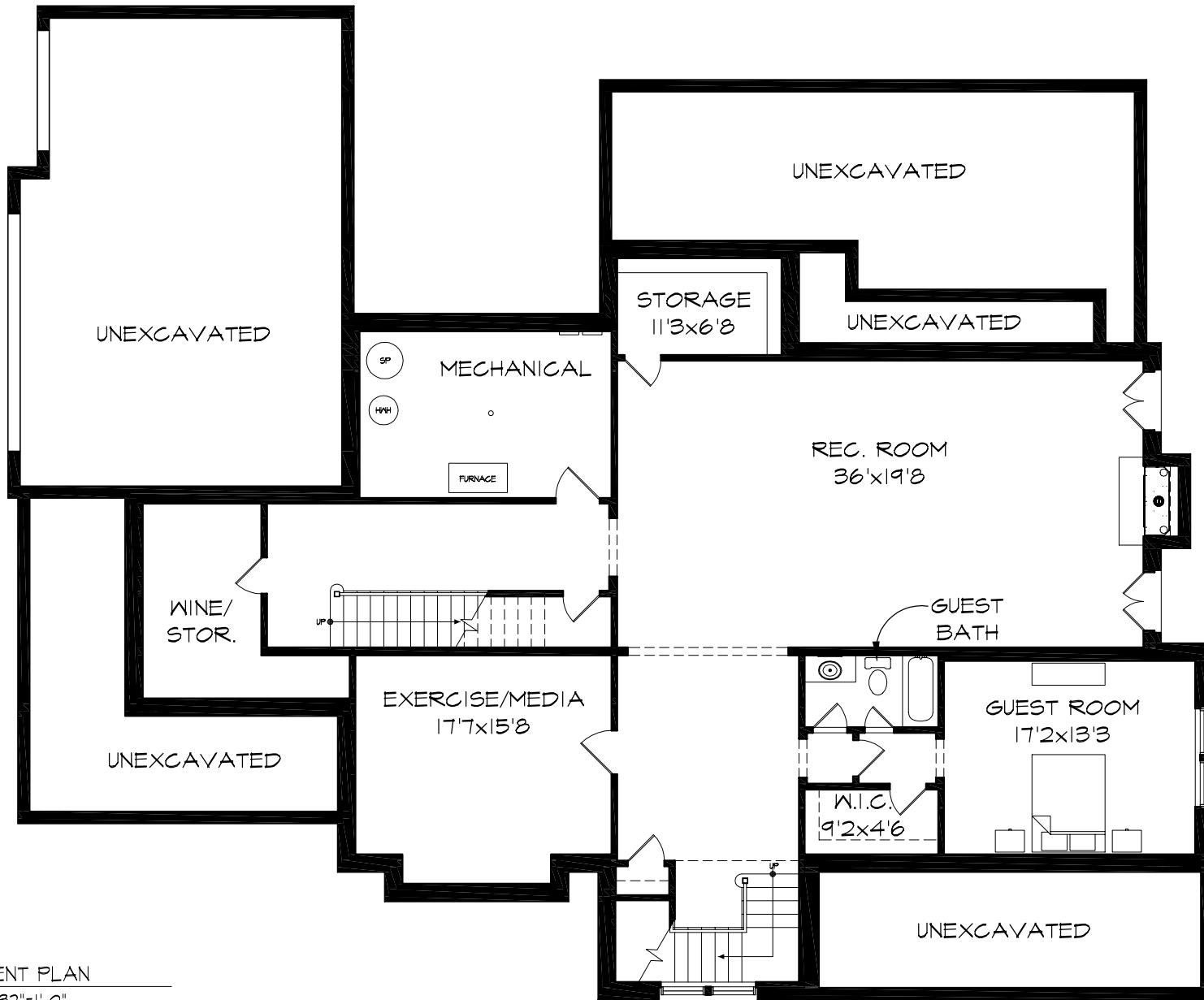
COPYRIGHT 2011, GTM ARCHITECTS, INC.



GTM ARCHITECTS
7735 OLD GEORGETOWN ROAD
SUITE 700
BETHESDA, MD 20814
(240)333-2000
(240)333-2001 FAX

11.0136

*DETAILS AND DIMENSIONS MAY DIFFER FROM ACTUAL PLANS AND ELEVATIONS. RENDERINGS ARE FOR ILLUSTRATION PURPOSES ONLY. PLEASE REFER TO THE ARCHITECTURAL AND CIVIL DRAWINGS FOR ACCURATE SITE CONDITIONS.



BASEMENT PLAN
SCALE: 3/32"=1'-0"

6616 LYBROOK COURT

BETHESDA, MD 20817

2,178 FIN. SF

COPYRIGHT 2011, GTM ARCHITECTS, INC.



*DETAILS AND DIMENSIONS MAY DIFFER FROM ACTUAL PLANS AND ELEVATIONS. RENDERINGS ARE FOR ILLUSTRATION PURPOSES ONLY. PLEASE REFER TO THE ARCHITECTURAL AND CIVIL DRAWINGS FOR ACCURATE SITE CONDITIONS.



RIGHT SIDE ELEVATION
SCALE: 3/32"=1'-0"

6616 LYBROOK COURT

BETHESDA, MD 20817

COPYRIGHT 2011, GTM ARCHITECTS, INC.



GTM ARCHITECTS
7735 OLD GEORGETOWN ROAD
SUITE 700
BETHESDA, MD 20814
(240)333-2000
(240)333-2001 FAX

11.0136

*DETAILS AND DIMENSIONS MAY DIFFER FROM ACTUAL PLANS AND ELEVATIONS. RENDERINGS ARE FOR ILLUSTRATION PURPOSES ONLY. PLEASE REFER TO THE ARCHITECTURAL AND CIVIL DRAWINGS FOR ACCURATE SITE CONDITIONS.



REAR ELEVATION
SCALE: 3/32"=1'-0"

6616 LYBROOK COURT

BETHESDA, MD 20817

COPYRIGHT 2011, GTM ARCHITECTS, INC.



11.0136

*DETAILS AND DIMENSIONS MAY DIFFER FROM ACTUAL PLANS AND ELEVATIONS. RENDERINGS ARE FOR ILLUSTRATION PURPOSES ONLY. PLEASE REFER TO THE ARCHITECTURAL AND CIVIL DRAWINGS FOR ACCURATE SITE CONDITIONS.



LEFT SIDE ELEVATION
SCALE: 3/32"=1'-0"

6616 LYBROOK COURT

BETHESDA, MD 20817

COPYRIGHT 2011, GTM ARCHITECTS, INC.



11.0136